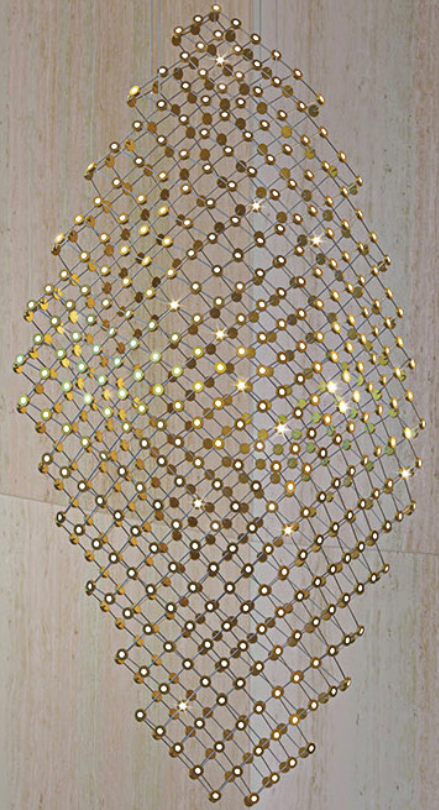


**lilix**

SOUTH MELBOURNE  
205

 **SAMMA**  
PROPERTY GROUP

# About Samma Property Group





A modern interior space featuring a large, curved wall with a wood-grain texture and a ceiling with a series of parallel wooden slats. The lighting is warm and focused, creating a sophisticated atmosphere. In the foreground, there is a small, round, white table with two gold-colored vases, and a curved concrete counter with a glass vase of green plants. The floor is made of large, dark tiles.

## *It's the attention to detail that really sets us apart.*

Samma Property Group has been Melbourne's most innovative and ground-breaking developer for over 25 years.

A father and his three sons pooled their talents to create unique, off-the-plan apartment developments and deliver them with the highest quality workmanship. Original design and inspired thinking drives Samma Property Group.

Samma Property Group's developments are leading edge and aspirational, never run of the mill or commonplace.

The creativity is evident in the pioneering and visionary landmark residential buildings they have created in Melbourne. Above all, Samma Property Group is known for the uncompromising quality of their apartments.









# **The Building**





**FOR SALE OR LEASE**  
**Prime Office or Retail Opportunity**

■ Area:  
288sqm  
(approx)

■ 2 car  
spaces

■ As a whole  
or in 2 lots

■ Kitchen  
services  
provided

Stanley Chu  
0401 256 605

Trent Macartney  
0411 940 010

MMA  
PROPERTY GROUP

**LET US MAKE  
YOUR APARTMENT**

Mal Younes 04  
Xin Li 04







# Residences

*Masterful architecture  
and crafted interiors  
respond to the lively and  
eclectic urban context.*

From the luxuriously finished foyer to your light-filled apartment, you'll feel the contemporary sensibility and attention to detail.

A zoned living approach makes spaces both welcoming and functional, with access, storage, appliances and connectivity designed in.

Generous apartment frontages to the street, courtyard and revitalised laneways provide ample light and air, with large usable balconies and courtyards.







Livingroom (Artists Render)



Apartment Kitchen (Artists Render)



Apartment Bathroom (Artists Render)



# Resident Facilities

## **Resident's lounge**

A beautifully furnished lounge welcomes residents home, offering a stylish and tranquil space to unwind.

## **Landscaped courtyard**

A lush central courtyard is designed as a quiet sanctuary – a superbly landscaped urban oasis exclusively for residents to share.

## **Rooftop terrace with barbeque**

Astounding city and bay views await residents on their exclusive rooftop terrace, with barbeque facilities fostering a warm community environment.

## **Carpark & storage cages**

A sophisticated car lift system and ample storage facilities are provided to residents to support modern lifestyles.





Ground floor central courtyard



Lobby space with lounge



Rooftop terrace with BBQ area





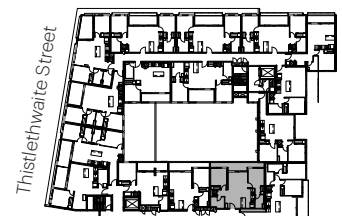
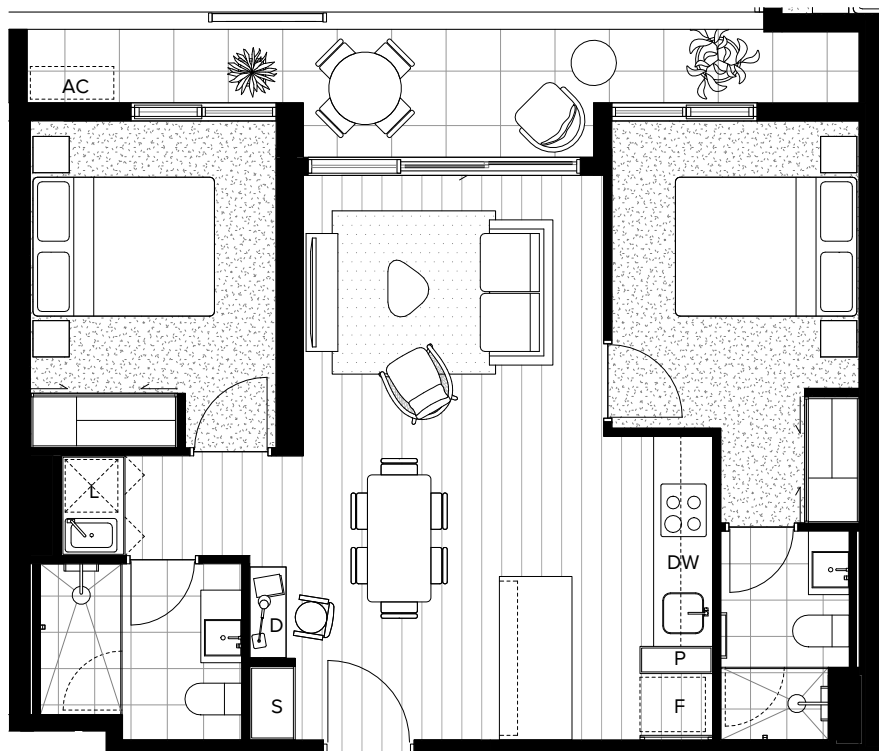
# Floorplans

# Apartment 213

\$653,500

## SPECIFICATIONS

Bedrooms	2
Bathrooms	2
Carpark	1
Apartment	66.0 m <sup>2</sup>
Terrace	11.2 m <sup>2</sup>
Total	77.2 m <sup>2</sup>
Colour:	Dark Scheme
Upgrade:	Blinds



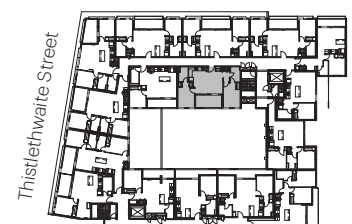
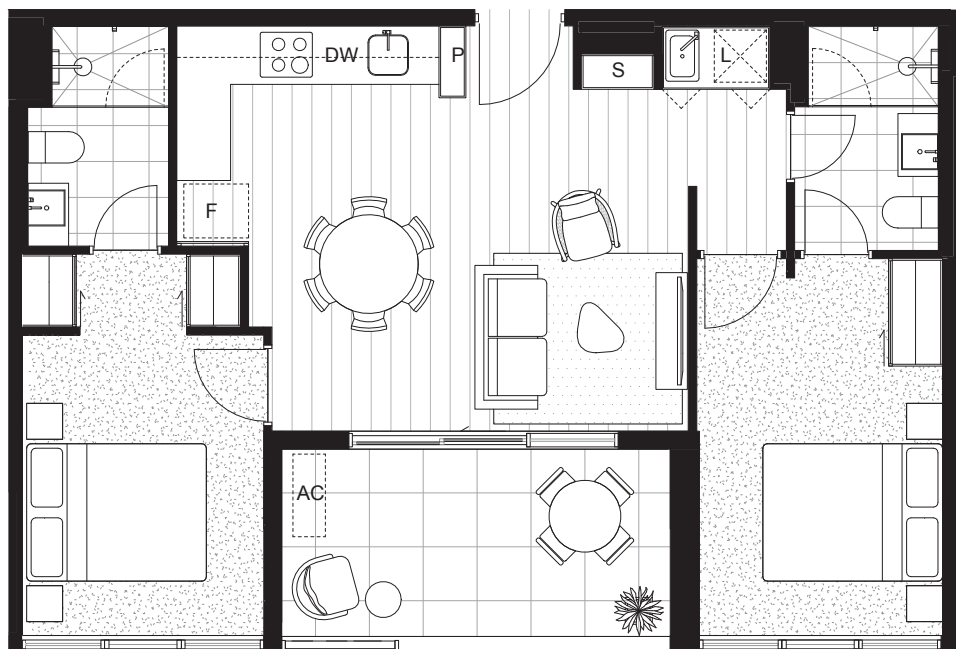


# Apartment 309

**\$659,500**

## SPECIFICATIONS

Bedrooms	2
Bathrooms	2
Carpark	1
Apartment	65.2 m <sup>2</sup>
Terrace	10.1 m <sup>2</sup>
Total	75.3 m <sup>2</sup>
Colour:	Dark Scheme
Upgrade:	Blinds



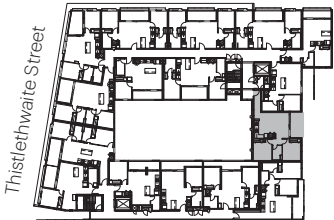
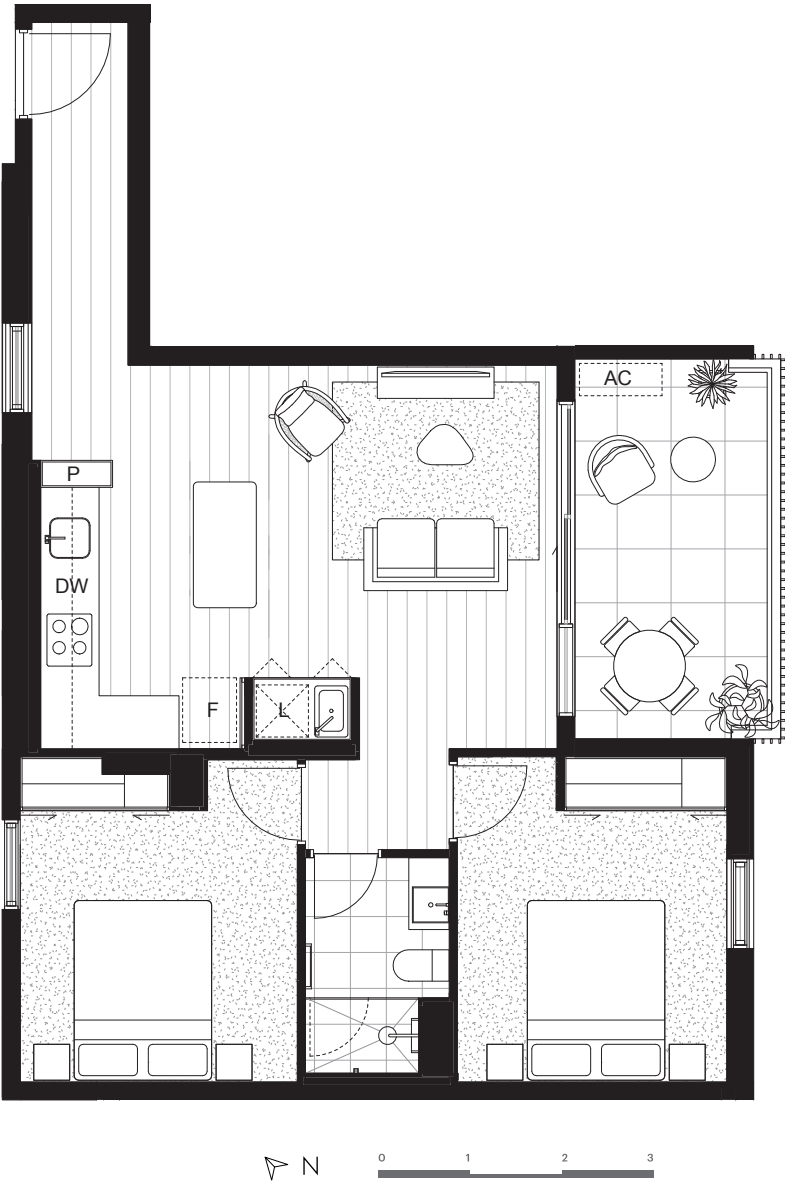
# Apartment 315

\$669,500

## SPECIFICATIONS

Bedrooms	2
Bathrooms	1
Carpark	1
Apartment	65.3 m <sup>2</sup>
Terrace	10.0 m <sup>2</sup>
Total	75.3 m <sup>2</sup>

Colour:	Light Scheme
Upgrade:	Blinds



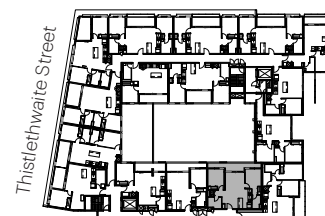
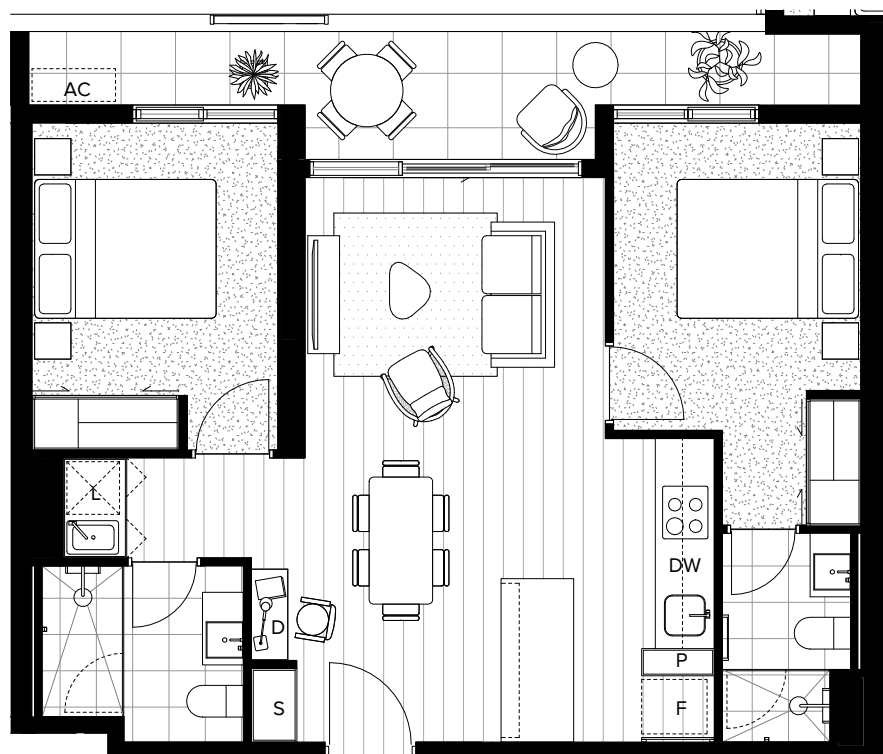


# Apartment 313

**\$659,500**

## SPECIFICATIONS

Bedrooms	2
Bathrooms	2
Carpark	1
Apartment	66.0 m <sup>2</sup>
Terrace	11.2 m <sup>2</sup>
Total	77.2 m <sup>2</sup>
Colour:	Dark Scheme
Upgrade:	Blinds





# Gallery



# Apartment 401

\$495,000

## SPECIFICATIONS

Bedrooms	1
Bathrooms	1
Apartment	55.10 m <sup>2</sup>
Terrace	8.1 m <sup>2</sup>
Total	63.2 m <sup>2</sup>
Colour:	Dark Scheme
Upgrade:	Integrated Fridge
	Blinds





# Gallery

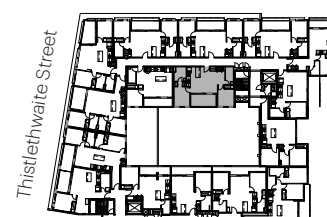
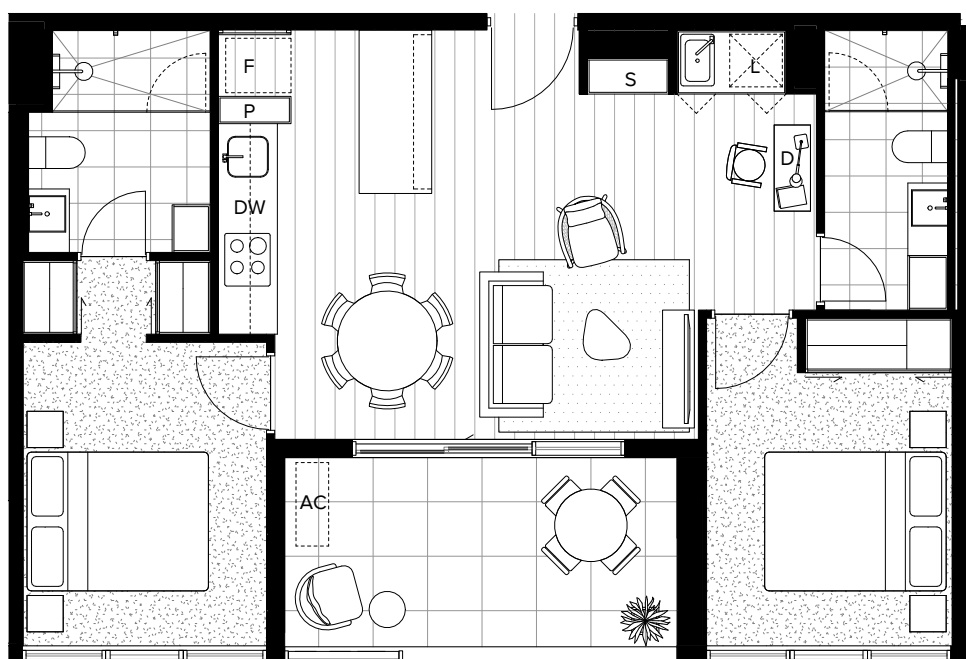


# Apartment 409

\$668,500

## SPECIFICATIONS

Bedrooms	2
Bathrooms	2
Carpark	1
Apartment	65.2 m <sup>2</sup>
Terrace	10.1 m <sup>2</sup>
Total	75.3 m <sup>2</sup>
Colour:	Light Scheme
Upgrade:	Blinds



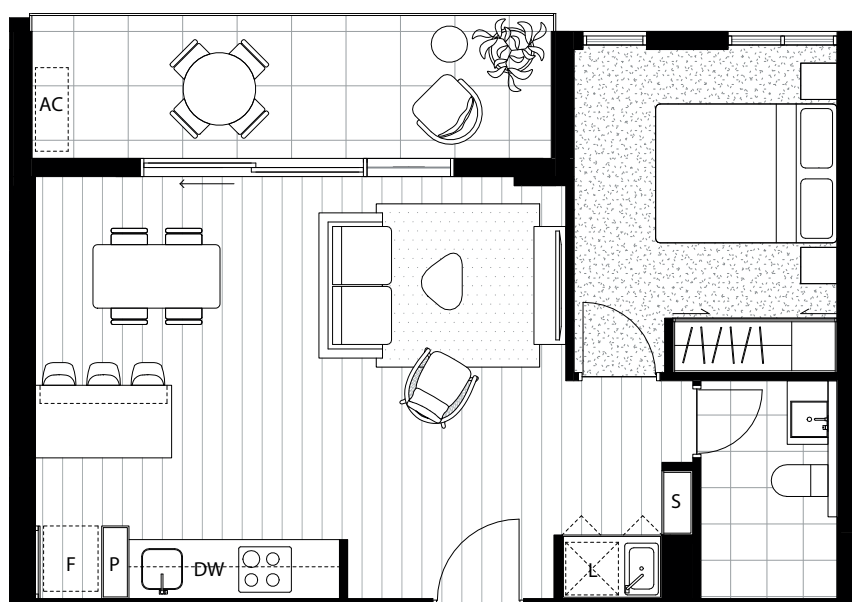


# Apartment 504

\$485,000

## SPECIFICATIONS

Bedrooms	1
Bathrooms	1
Apartment	50.0 m <sup>2</sup>
Terrace	9.4 m <sup>2</sup>
Total	59.4 m <sup>2</sup>
Colour:	Dark Scheme
Upgrade:	Integrated Fridge
	Blinds



# Gallery







51-59 Thistlethwaite St, South Melbourne VIC 3205 | [www.sammagroup.com.au](http://www.sammagroup.com.au)